A large, light gray watermark of the ABS logo is centered in the background of the page.

RELEASE NOTES

ABSSolute v9.09.00

ABS Laundry Business Solutions

Introduction

Version

Version	Status	Date	By	Changes
0.1	DRAFT	March 2025	TVS	DRAFT version

1 Contents

2	HIGHLIGHTS IN THIS RELEASE	5
2.1	Update Mobile Apps	5
2.2	Removal SOAP web services	5
3	General Services.....	7
3.1	Integrate secure payment link for CardConnect interface for ABS Web portal	7
3.2	Online Payment Confirmation	9
3.3	Dlg. Transport Article => volume factor available under TLA	10
3.4	Container Shipping Scan - prevent date selector pop-up to appear	11
3.5	Exchange Cart - Landscape mode	12
3.6	Exchange Cart – Local Print Server	13
3.7	Adding fields "Service Employee" and "Sales Employee 1" in the grid view of Maintain Invoices dialog	15
3.8	Enhance audit trail dialog	16
3.9	CRM customer number special tab customer dialog.....	17
4	Linen Services.....	18
4.1	No changes to Linen services in this release.....	18
5	Garment Services	19
5.1	Reason Code in making COG Items.....	19
6	Residential Services.....	20
6.1	No changes to residential services in this release	20
7	Mat Services.....	20
7.1	No changes to mat services in this release	20
8	OR Services.....	20
8.1	No changes to OR services in this release.....	20
9	Cleanroom Services.....	20
9.1	No changes to cleanroom services in this release	20
10	Washroom Services	20
10.1	No changes to washroom services in this release	20
11	Facility Services	20
11.1	No changes to washroom services in this release	20
12	Oracle Analytics	21
12.1	iNet to OAS - 9.08.02 - Linen (Wave 1)	21
12.2	iNet to OAS - 9.09.00 - Linen (Wave 2)	23
12.3	Replace UHF Monitor (webX) by OAS Dashboard	24

12.4	OAS Dashboard – Soil Arrival	26
12.5	OAS Dashboard – Clean Departure	27

2 HIGHLIGHTS IN THIS RELEASE

This release introduces the following main features.

2.1 Update Mobile Apps

All mobile applications (Android) have been updated to the latest SDK (Software Development Kit).

This means that the backbone of the mobile applications are brought back up to date.

2.2 Removal SOAP web services

Please be aware that the web services that are based on the SOAP communication protocol have been removed from the code.

This means that all web services have been converted to the modern REST protocol.

CONTENT PER BUSINESS LINE (SHORTCUT)

**General Features****Linen Services****Garment Services****Residential Services****Mat Services****OR Services****Cleanroom Services****Washroom Services**

3 General Services

This section contains the main general improvements to ABSSolute that cannot be grouped under one specific business line.

3.1 Integrate secure payment link for CardConnect interface for ABS Web portal

ABS NUMBER	ABSN-520
PURPOSE	To allow for ad-hoc payments of invoices in ABS through the customer web portal using credit card or ACH (eCheck) accounts, in combination with the existing interface to payment processor CardConnect
AFFECTED DIALOGUES	Web User, Plants, Customer web portal
SYSTEM SETTINGS	N/A
MODULES	ACHAUTOPAYMENT, CREDITCARDINTERFACE

The electronic payment interface with ABS' payment processing partner CardConnect has been extended to allow customer web users to pay invoices in ABS directly through the ABS customer web portal, using either a credit card or an ACH (eCheck) account.

The individual web user can be set to allow to pay invoices:

WebUser

Modify WebUser

Save and Exit Exit First Previous Next Last

Login name BAN

E-mail Address

☒ Active ☐ Read-only

☐ Advanced Report Preview

Plant

Language EN_US English (United States)

Customers Menu Access Custom Information Message Password Show on web

Custom Information

☐ Is Laundry Representative (full access)

☐ Has Access to Custom Information (Shared Folders)

☐ Has Access to own User Folders

☐ Has Access to Secure Folders

☒ Allow to pay invoices

On the web portal, when viewing invoices, the user then has the option to select invoices they wish to pay, and pay them now:

ABS

Financial Information Main Search

View Invoices

Show All Invoices From 06/01/2021 Show

Pay Now	Invoice	Date	Status	Deliver-to Customer
<input checked="" type="checkbox"/> Pay Now	20002467	01/13/2025	Open	

A secure hosted iFrame pop-up window then allows the user to enter a card or bank account number and pay the selected invoice immediately:

Pay Invoices

Total Amount: 260.37 USD

Available Cash Balance: 0.00 USD ☐ Use available Cash Balance

Total to Pay: 260.37 USD

Payment Reference:

Card Number: XXXX-XXXX-XXXX-9124

This secure window is hosted through CardConnect, and for security reasons, passes only a token ID for credit cards back into ABS to be stored for the customer for future use, if desired. ACH accounts are stored encrypted in ABS for future use as well.

Upon successful payment processing, a remit batch is automatically created in ABS for the corresponding payment type:

Cash Application

Remit Batches | Open Credits | Applied Credits | Miscellaneous Transactions

☐ Show Unapplied Only ☒ Show All From 11/21/2024 to 11/21/2024

Remit Batches

Batch#	Batch Date	Total Batch Amount	Status	System User	Computed...	Payment Type	Timestamp
2000037	Jan 21, 2025	260.37	In Progress	APPA	260.37	Credit Card Portal	Jan 21, 20...

And the payment is automatically applied to the selected invoice accordingly:

Customer Financial Details

Customer: [Name] Show: All Business Units

Customer Search: Find Via Invoice # Find Via Reference Number ☐ This business unit only

Contact Person: [Name] Phone: AKVPEWTCCK

Invoices/Charges | Payments | All Transactions | Credit Info | Unsettled Invoices | Statements | Deliver to Customers

☐ Show Open Only ☒ Show All From 10/21/2024 To 01/21/2025 Load

Invoices

Date	Invoice#	Type	Terms	Billed	Paid	Current	30 Days	60 Days	90 Days	120 Days	Discount	Due Date	Past Due D...	Del To Cust...
Jan 13, 2025	20002467	Invoice	Charge	260.37	260.37	0.00	0.00	0.00	0.00	0.00	0.00	Jan 13, 2025	6	20109671

Linked Transactions

Invoice: 20002467 Date: Jan 13, 2025 Billed: 260.37 Paid: 260.37

Del to Customer: Open 0.00

Paid/Closed By:

Date	Type	Reference#	Method	Amount	Applied to L...	Customer ...	Customer ...	Apply Date	Apply Syst...	Apply Timestamp	Origin	System U...	Timestamp	Unapplied	Unapply D...	Unapply S...	Unapp...
Jan 21, 2025	Payment	9124	Charge	260.37	260.37			Jan 21, 2025		Jan 21, 2025 3:01 PM	WEB PORTAL	APPA	Jan 21, 2025 3:01 PM				

OK

With the origin of the payment showing that it was from the web portal, and the reference number being the last 4 digits of the credit card used for payment.

3.2 Online Payment Confirmation

ABS NUMBER	ABS-86550
PURPOSE	A pop window within ABS Web Portal that displays the credit card transaction details
AFFECTED DIALOGUES	N/A
SYSTEM SETTINGS	N/A
MODULES	CREDITCARDINTERFACE

The “pop-up” windows will appear for both approved and declined transactions. Below is an example “pop-up” window that displays an approved credit card transaction on the web portal.

Transaction approved!

Transaction ID: 3106657288

Billed Amount: 136.52

Convenience Fee: 10.0

Total Paid: 146.52

Card Number(last 4 digits): 2224

Timestamp: 2019-11-05

Thank you for your payment!

3.3 Dlg. Transport Article => volume factor available under TLA

ABS NUMBER	ABS-162216
PURPOSE	Address the oversight and make the volume factor available under module TLA for TLM to display the correct fill rate of containers.
AFFECTED DIALOGUES	-
SYSTEM SETTINGS	-
MODULES	Truck Load Assistant

Now, the volume factor is also available under module TLA, and the Fill Rate of containers can be properly displayed.

Based on the volume factor of the container, the maximum number of products that can be loaded on a container, and the type of products, this calculation will display the column icon in the Truck Load Manager with the correct details.

Transport Articles

Add
 Modify
 Delete
 Duplicate
 Grid Views
 Print

Code	Description	Default	Max Fill Percentage	Volume Factor
1	Large container	<input checked="" type="checkbox"/>	100	1.00
2	Box	<input type="checkbox"/>	100	1.00
3	Container	<input type="checkbox"/>	100	1.00
4	Bag	<input type="checkbox"/>	100	1.00

Transport article

Modify Transport article

Save and Exit
 Exit
 First
 Previous
 Next
 Last

Code:

Description:

☐ Default

Foreign Descriptions	
Language	Description
español (E...	Caja
français (Fr...	

Truck Load Manager							
Route Preparation / 80 Amsterdam - South							
<div> <div>↑</div> <div>CONTAINERS</div> <div>Pack</div> </div>							
Status	Customer	Department	Note #	Container ID	Weight	Fill	Product
Packed	Hospital Amsterdam	Nursery	...75359	65465477	63 kg		40 Bed S
Packed	Clinic ABS	Linen Room	...57897	97889674	35 kg		34 Bed S

3.4 Container Shipping Scan - prevent date selector pop-up to appear

ABS NUMBER	ABS-171221
PURPOSE	Ability to remove pop-up confirming delivery date
AFFECTED DIALOGUES	Container Shipping Scan
SYSTEM SETTINGS	CONTAINERSHIPPINGCONFIRM
MODULES	CONTAINERSHIPSCAN / LINEN

With the introduction of the new and improved flow for linen in combination with Infinity the v9 touch screen application Container Shipping Scan was extended with a pop-up to be able to reconfirm the delivery date of a delivery note.

However, this is a slight reduction in workflow speed. Therefore, with a new temporary system setting CONTAINERSHIPPINGCONFIRM the behaviour of this pop-up can now be controlled:

0 = No confirmation of delivery date/route

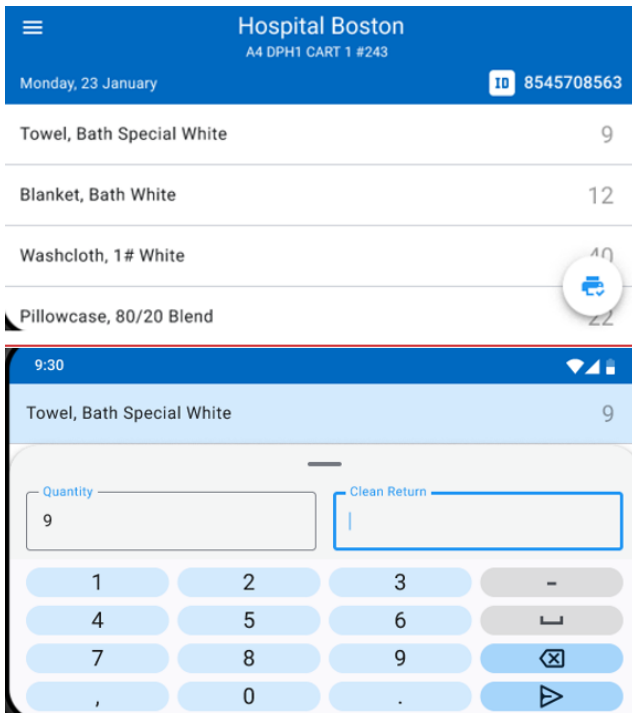
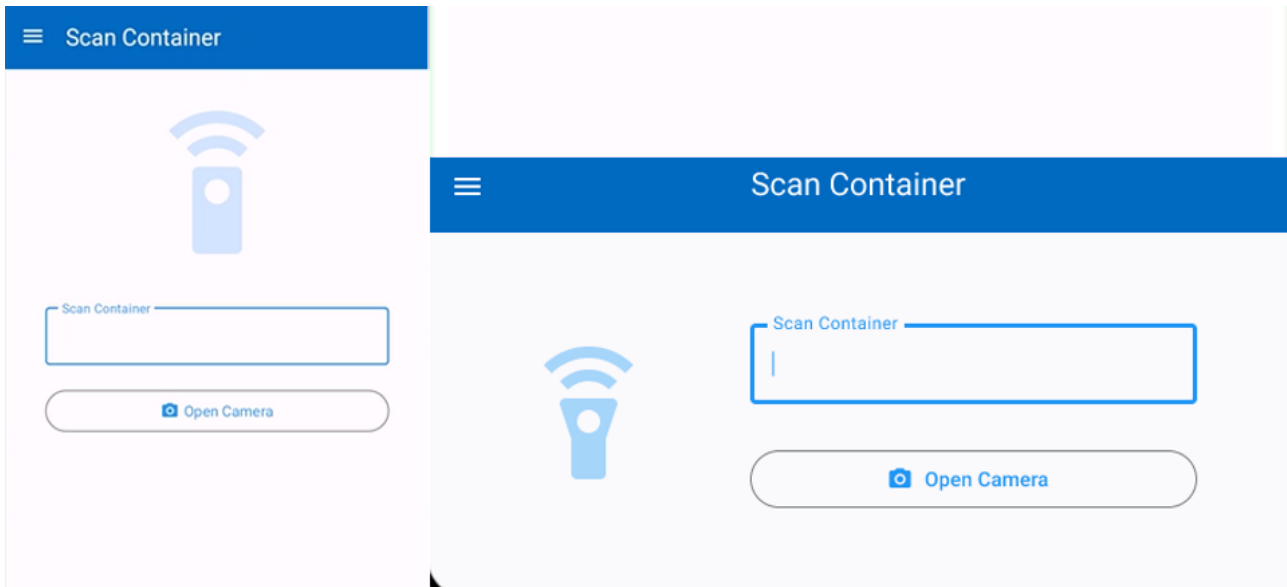
1 = Confirm delivery date and route (popup dialog).

This setting is used in the ContainerShippingScan dialog and only in combination with the module LINEN.

3.5 Exchange Cart - Landscape mode

ABS NUMBER	ECA-29
PURPOSE	Implement ability to use ECA in Landscape mode
AFFECTED DIALOGUES	
SYSTEM SETTINGS	
MODULES	

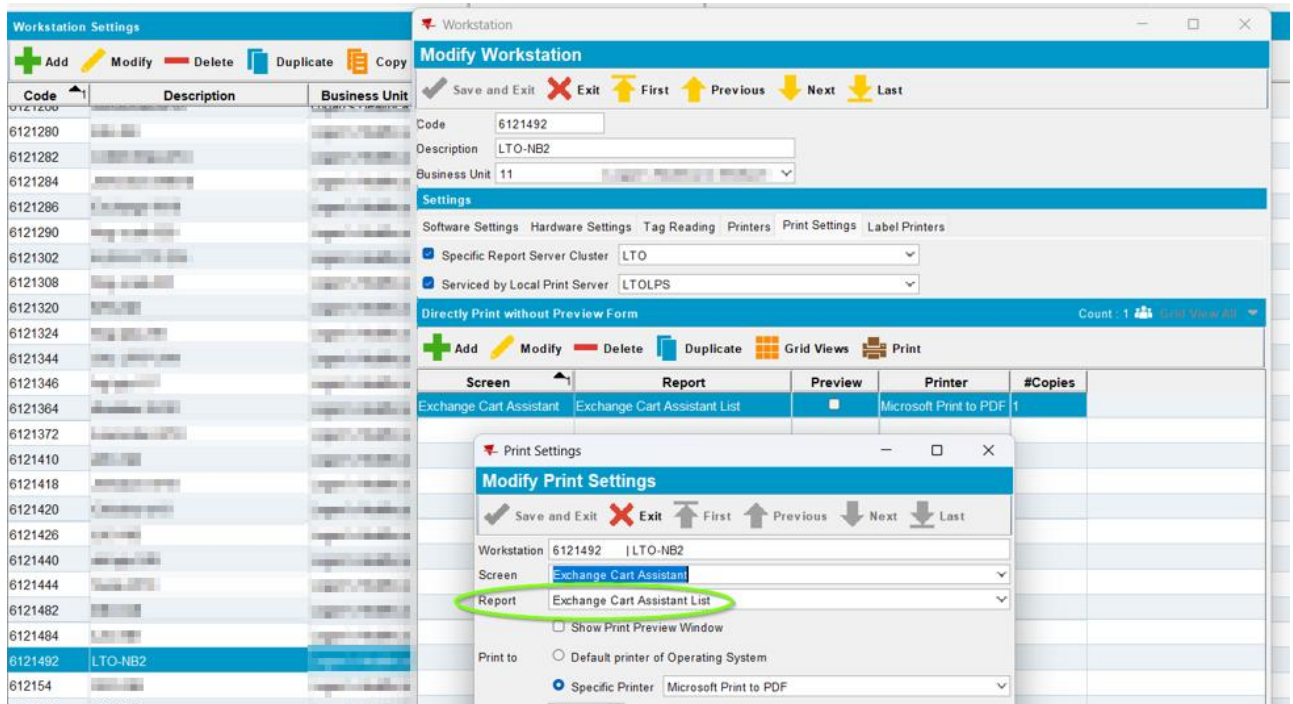
Per popular request. The Exchange Cart Assistant (Android app) can now also be used in “Landscape” mode.



3.6 Exchange Cart – Local Print Server

ABS NUMBER	ECAN-1
PURPOSE	Connect ECA to LPS to print via Workstation Settings
AFFECTED DIALOGUES	
SYSTEM SETTINGS	
MODULES	

The Exchange Cart Assistant has been extended to initiate the printing of documents via the Local Print Server.



The workstation settings and the settings within the Exchange Cart Assistant need to be set before printing is possible.

Settings

Host IP or URL

Port #

Business Unit

11

Secure Connection

Printer Details

☒ Print via LPS

☐ Print via Bluetooth

Workstation Code

Please fill workstation code!

Export Database

Empty Database

3.7 Adding fields "Service Employee" and "Sales Employee 1" in the grid view of Maintain Invoices dialog


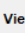


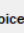


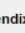

ABS NUMBER	ABS-169562
PURPOSE	Adding fields "Service Employee" and "Sales Employee 1" in the grid view of "Maintain Invoices" dialog
AFFECTED DIALOGUES	MAINTAIN INVOICES
SYSTEM SETTINGS	-
MODULES	-

We added four new columns to the grid views of "Maintain Invoices" dialog:

Code and Name of Service Employee

Code and Name of Sales Employee

The service employee number and sales employee number can also be used as criteria filters in the personalized views.

Final Invoices								
	 View	 Print Invoice	 Print Appendixes	 E-Mail Invoice	 Grid Views	 Print Grid	 Load More	 Load All
Date	Invoice#	Debtor#	Customer#	Prebilled ...	Service Employ...	Service Employee Name	Sales Emp...	Sales Employee Name ▼ ¹
01-Nov-2023	99000077	10	10	180.00	21	SERVICE EMPLOYEE TEST	22	SALES EMPLOYEE TEST

3.8 Enhance audit trail dialog

ABS NUMBER	ABS-164939
PURPOSE	Adding fields "Service Employee" and "Sales Employee 1" in the grid view of "Maintain Invoices" dialog
AFFECTED DIALOGUES	Audit Trail Monitor
SYSTEM SETTINGS	-
MODULES	AUDIT

The Audit Trail Monitor has been extended to enhance the use of the Audit Trailing.

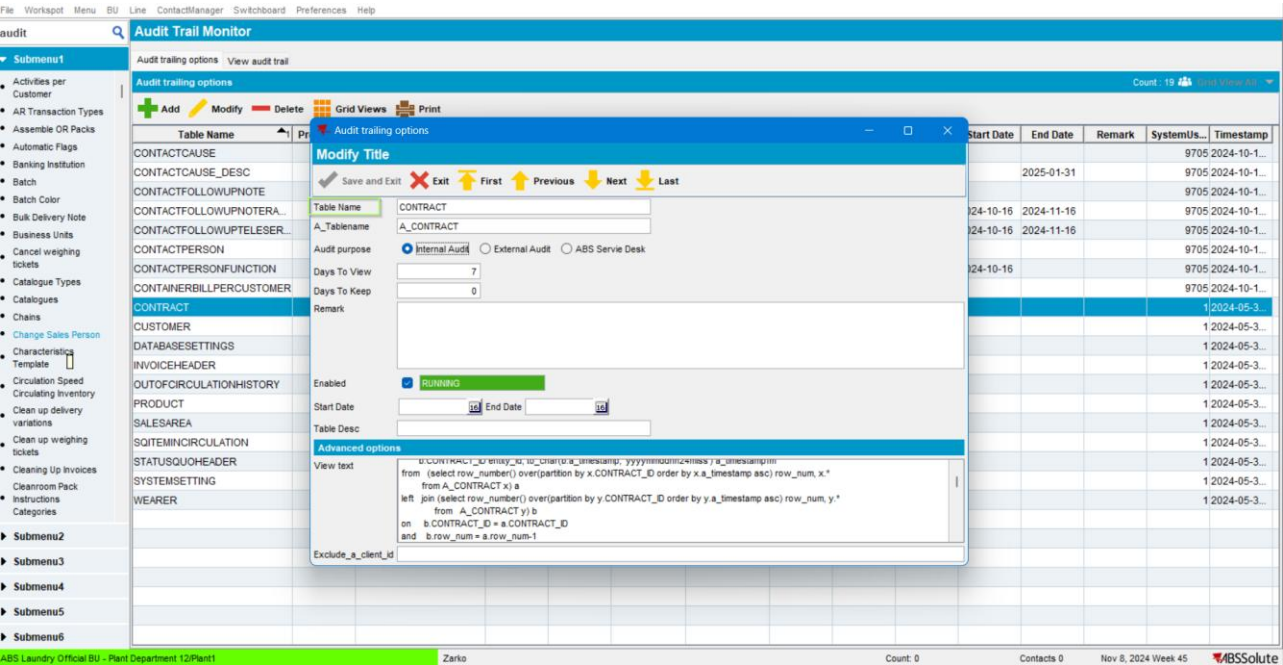
A number of fields have been added:

Audit Purpose

Internal / External / ABS Service Desk

Remark Field

Optional Start and End Date for auditing. To integrate this then in the renamed task from Audit Clean-Up to Audit Maintenance. that it checks daily, if an audit needs to be started or stopped and does the cleanup, so it will be a calling a different procedure that will do these 2 things, cleanup and start stop audit if needed.



3.9 CRM customer number special tab customer dialog

ABS NUMBER	ABSN-521
PURPOSE	Remove restrictions on CRM customer number field
AFFECTED DIALOGUES	Audit Trail Monitor
SYSTEM SETTINGS	SHOWCRMCUSTOMERNO
MODULES	AUDIT

The goal of this request was to remove many restrictions that existed on the CRM Customer number field.

When the module SALESFORCE is NOT in the license the field can still be made available via the system setting.

Also the unique constraint has been removed when the module SALESFORCE is not in the license.

The screenshot shows the 'System Settings' dialog with the 'Modify System setting' tab active. The 'Plant' is set to '1' (VALLADOLID) and the 'Setting Group' is 'Customer Screen Settings'. The 'Name' field is 'SHOWCRMCUSTOMERNO', the 'Type' is 'Integer', and the 'Value' is '1'. The 'Factory Default' is '0'. The 'Description' field contains the text: 'Being able to connect the external CRM Customer Number in the customer in ABSSolute. Possible Values: 0 = Not Visible, 1 = Visible, not mandatory, 2 = Visible, mandatory'. The '1 = Visible, not mandatory' option is highlighted in yellow.

The screenshot shows the 'Inquiry Customers' dialog with the 'Special' tab active. The 'Number' field is '6' and the 'Name' field is empty. The 'Legacy Customer Number' field is empty. The 'Special' tab is selected, and the 'CRM Customer Number' field is highlighted in yellow. The 'Export' section shows the 'CSV File Separator' as a comma (,) and the 'Export Delivery Note Info' checkbox is unchecked.

4 Linen Services

This section outlines the primary linen-specific enhancements to *ABSSolute*.

4.1 No changes to Linen services in this release

5 Garment Services

This section outlines the main improvements to ABSSolute for the specific garment.

5.1 Reason Code in making COG Items





ABS NUMBER	ABS-169201
PURPOSE	Add the option to select a reason when creating COG items.
AFFECTED DIALOGUES	Make Unique Customer Owned Items
SYSTEM SETTINGS	-
MODULES	-

In the “Make unique owned customer items” section, there was no selection for reason codes available. This means that customers are unable to distinguish between the reason codes, which affects the invoicing of the items created. In some cases, the user may want to select a different reason code to charge for extra actions performed on the items; additionally, this will be possible when the user can select a reason code in the dialog.

Make Unique Customer Owned Items



Customer ?

Choose Wearer

 Add Wearer  Grid Views  Load More  Load All


Wearer#	Name	Department	Admin#


Choose Product

 Add Product  Grid Views

Code	Description	Finishing ...	Finishing ...	Size Defini...	Size Defini...

Scan ID Code

 F10-Assign

 F8-Generate

Reason Code

☐ Generate Outscan

6 Residential Services

This section outlines the primary residential improvements to *ABSSolute*.

6.1 No changes to residential services in this release

7 Mat Services

This section outlines the primary Mat Services enhancements to *ABSSolute*.

7.1 No changes to mat services in this release

8 OR Services

This section outlines the primary OR Services enhancements to *ABSSolute*.

8.1 No changes to OR services in this release

9 Cleanroom Services

This section outlines the primary Cleanroom enhancements to *ABSSolute*.

9.1 No changes to cleanroom services in this release

10 Washroom Services

This section outlines the primary Washroom Services enhancements to *ABSSolute*.

10.1 No changes to washroom services in this release

11 Facility Services

This section outlines the primary Facility Services enhancements to *ABSSolute*.

11.1 No changes to washroom services in this release

12 Oracle Analytics

This section outlines the main improvements to ABSSolute for the specific topic Oracle Analytics.

12.1 iNet to OAS - 9.08.02 - Linen (Wave 1)

ABS NUMBER	BI-1203
PURPOSE	Convert statistical reports from iNet to Oracle Analytics
AFFECTED DIALOGUES	-
SYSTEM SETTINGS	-
MODULES	BI – Business Intelligence

The implementation and roll-out of the ABSSolute Infinity productions screens gathers momentum; this, in combination with the multitude of options within Oracle Analytics, led ABS to the decision that statistical reports within the v9 client will remain as they are.

Improvements and extensions will only be processed within Oracle Analytics.

This means that within the coming release, the v9 statistical reports will be converted to the Oracle Analytics platform. With the release of v9.08.02, the first 'wave' of reports has been converted; these are the following:

Delivered Products
ReportDeliveredProducts
ReportSummaryDeliveredProducts
ReportDeliveredProductsPerWeek
ReportMonthDeliveredArticles
ReportPeriodDeliveredArticles
ReportLast12Deliveries
YearReportDeliveredProducts
YearReportDeliveredProductsMonth
ReportWeekDeliveredProductsPerPlant
ReportPeriodDeliveredProductsPerPlant
ReportMonthDeliveredProductsPerPlant
ReportYearDeliveredProductsPerPlant
ReportAverageDeliveryPerDay
ReportFreeOfChargeDeliveries
ReportDeliveriesPerEmployee
ReportMonthlyUsage
ReportCirculationSpeed
Soil Received Products
ReportSoilCountedProducts
Weights
ReportRecordedWeights
ReportWeekRecordedWeights
ReportMonthRecordedWeights
ReportPeriodRecordedWeights
ReportPeriodRecordedWeightsPerDay
YearReportWeights
ReportTheoreticalWeightComparison

ReportWeekRecordedWeightsPerPlant
ReportMonthRecordedWeightsPerPlant
ReportPeriodRecordedWeightsPerPlant
ReportYearRecordedWeightsPerPlant
ReportSoilWeightPerDayAndRoute

12.2 iNet to OAS - 9.09.00 - Linen (Wave 2)

ABS NUMBER	BI-1203
PURPOSE	Convert statistical reports from iNet to Oracle Analytics
AFFECTED DIALOGUES	-
SYSTEM SETTINGS	-
MODULES	BI – Business Intelligence

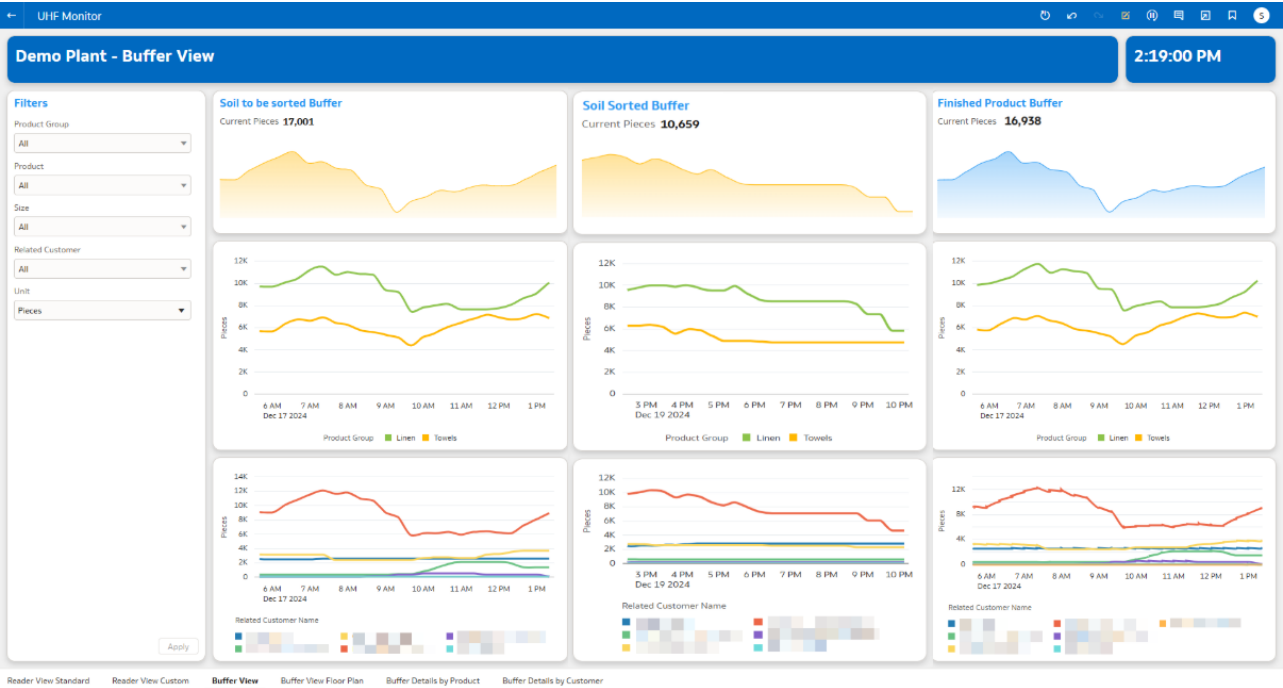
The implementation and roll-out of the ABSSolute Infinity productions screens gathers momentum; this, in combination with the multitude of options within Oracle Analytics, led ABS to the decision that statistical reports within the v9 client will remain as they are.

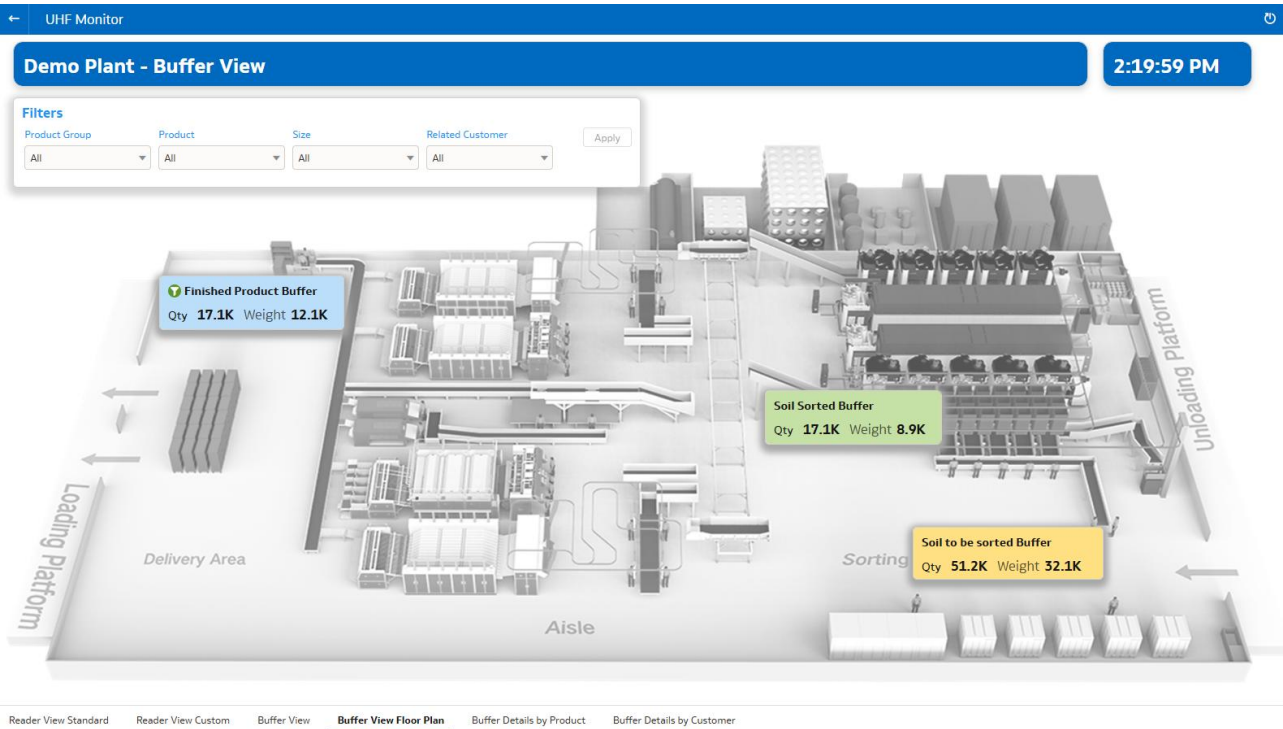
Improvements and extensions will only be processed within Oracle Analytics. With the Core Release v9.09.00 “Wave 2” the last one has been completed and are now available via OAS.

v9 ABSSolute - ReportUniquePoolAvgDelivery - to OAS
v9 ABSSolute - ReportOnSiteInventoryCheck - to OAS
v9 ABSSolute - ReportCustPoolAgeAnalysis- to OAS
v9 ABSSolute - ReportAvailableBundles - to OAS
v9 ABSSolute - ReportDeliveryNoteBalanceTracking - to OAS
v9 ABSSolute - ReportNotReceivedCustomerOrders - to OAS
v9 ABSSolute - ReportOrderExceptions - to OAS
v9 ABSSolute - ReportPlantMerchandiseRequirement - to OAS
v9 ABSSolute - ReportProductionPlanningByProduct - to OAS
v9 ABSSolute - ReportPoolItemScans - to OAS
v9 ABSSolute - ReportCirculatingInventory - to OAS
v9 ABSSolute - ReportShortages - to OAS
v9 ABSSolute - ReportAgeAnalysisPoolItems - to OAS
v9 ABSSolute - ReportUniquePoolItems - to OAS
v9 ABSSolute - ReportRejectedScans - to OAS
v9 ABSSolute - ReportSummaryUniquePool - to OAS
v9 ABSSolute - ReportSoilCountedProducts - to OAS
v9 ABSSolute - ReportPoolItemRagStatistics - to OAS
v9 ABSSolute - ReportOnSiteInventory - to OAS
v9 ABSSolute - ReportUniquePoolAvgDelivery - to OAS
v9 ABSSolute - ReportPoolItemRagStatistics - to OAS
v9 ABSSolute - Replace UHF Monitor (webX) by OAS Dashboard
v9 ABSSolute - ReportOnSiteInventory - to OAS
v9 ABSSolute - ReportOnSiteInventoryCheck - to OAS
v9 ABSSolute - ReportCustPoolAgeAnalysis- to OAS

12.3 Replace UHF Monitor (webX) by OAS Dashboard

ABS NUMBER	BIN-27
PURPOSE	Create a new OAS Dashboard to replace the WebX UHF Monitor.
AFFECTED DIALOGUES	-
SYSTEM SETTINGS	-
MODULES	BI – Business Intelligence





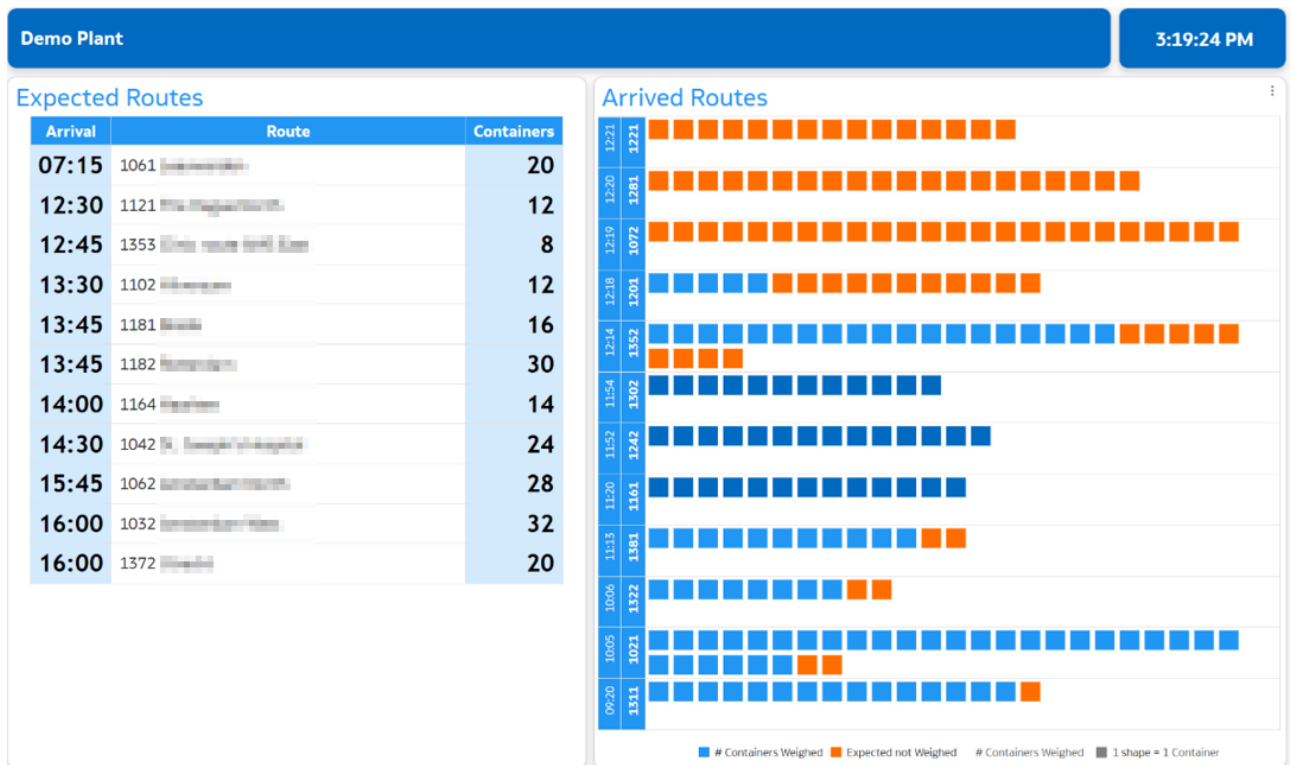
12.4 OAS Dashboard – Soil Arrival

ABS NUMBER	BI-1617
PURPOSE	Create a new OAS Dashboard for the Soil Arrival area within the laundry
AFFECTED DIALOGUES	-
SYSTEM SETTINGS	-
MODULES	BI – Business Intelligence

ABS is extending the functionality around the logistical flows within a laundry.

Based on the number of scan options throughout the process the Soil Arrival dashboard has been created as a concept to visualize the incoming routes and the number of containers onboard the trucks.

Next to that the dashboards also shows the progress in weighing and scanning these containers.



12.5 OAS Dashboard – Clean Departure

ABS NUMBER	BIN-11
PURPOSE	Create a new OAS Dashboard for the Clean Departure area within the laundry
AFFECTED DIALOGUES	-
SYSTEM SETTINGS	-
MODULES	BI – Business Intelligence

ABS is extending the functionality around the logistical flows within a laundry.

Based on the number of scan options throughout the process the Clean Departure dashboard has been created as a concept to visualize the outgoing routes and the number of containers to be loaded onboard the trucks.

Next to that the dashboards also (possibly) shows the progress in packing notes that are not registered as being ready to be loaded.

Demo Plant								10:31:39 PM		
Scheduled Routes								Departed Routes		
Departure	Route	Dock	Truck Code	Status	Notes to Pack	Containers	Weight	Departed	Route	Driver
09:30	2132	2	90-BPD-8	Loaded		42	2,378	09:12	2182	Jack
09:30	2372	4	14-BTK-2	Loaded		34	2,053	09:01	2241	Pete
09:45	2322	1	71-BRR-6	Loading		34	2,163	08:49	2062	Jim
10:15	2332	8	30-BJK-4	Loaded		36	2,055	07:08	2391	Harry
10:30	2382	5	29-BTK-2	Packed		28	1,700	07:04	2281	Brian
11:00	2022	3	95-BHZ-3	Loading		27	1,485	06:59	2341	John
11:30	2312	2	66-BGT-1	Loading		16	955	06:46	2131	David
12:00	2042		16-BHZ-6	Packing	22	40	2,476			
12:00	2082		52-BPD-5	Packing	2	21	2,710			
12:00	2352		34-BGT-9	Packed		32	1,871			
12:00	2422	6	V-93-GDV	Packed		14	916			
13:15	2242		35-BPD-6	Packed		57	3,196			
15:00	2111		51-BPD-5	Packing	5	103	5,750			
15:00	2151		52-BPD-5	To Pack		82	4,730			
16:30	2141		48-BXL-4	To Pack	31	19	1,165			